

Silverwoods of Lancashire

December Sale **On** **Thursday 15th December 2016** **at 10.00am**

at the Silverwoods Auction Room
Clitheroe Auction Mart
Lincoln Way
Clitheroe, Lancashire, BB7 1QD

Viewing Times

Tuesday 13th 4.00pm – 6.30pm
Wednesday 14th 10am – 2pm
Thursday 15th from 8.30am to start of sale
Or by appointment
Sale Starts at 10am

Tel: 01200 423322 Fax: 01200 429263
Buyers Premium – 18% (including VAT)

Entries are invited on every Monday between
9am – 3pm
Other times available by appointment
Please contact Wilf Mould

Lot No Description

Lot No Description

Ceramics & Glass

- 1 Royal Crown Derby porcelain paperweights, Schoolboy Teddy c.2001, 8cm high and a pair of Mandarin Ducks, 13cm long, all with stopper (3) £60-90
- 2 2 pairs of Royal Crown Derby plates, Imari Kings pattern, rust factory mark, date code for 1934, painted 383/8, 22.5cm diameter £80-120
- 3 A set of eleven 19th century Davenport plates, Imari pattern, hand painted with panels of birds and summer blooms on cream ground, within gilt highlighted cobalt blue borders, centrally gilded with stylised foli, 24cm diameter £120-150



3

- 4 A 19th century Chinese octagonal blue and white meat plate, decorated in a Willow Pattern style within a border of stylised foli and other devises, edge chip, 42cm long £50-100
- 5 A large 19th century blue and white turkey plate of canted rectangular form with draining channels and juice well, decorated in underglaze blue with flowering blooms within a stylised foliate border, 49cm by 39cm £30-40
- 6 A large Royal Doulton Watteau blue and white meat plate of rounded

rectangular form, decorated in underglaze blue with a scene of figures and courtiers in a classical landscape within a foliate border, 54cm by 44cm £50-70

- 7 A large Cauldon turkey plate of shaped rectangular form, decorated in underglaze blue with a scene of turkeys among grasses, within a foliate border enhanced with flying mallards, grouse, pheasant and woodcock, 55cm by 47cm £80-120



7

- 8 A Royal Worcester Heritage Collection sauce tureen with cover, ladle and stand, decorated with panels of shells on a gilt highlighted coral ground, copyright 1989, number 2016, 24cm wide (stand) boxed £80-120
- 9 A Ruskin pottery vase of tapering bulbous form with everted neck, crystalline glazed with a green/orange down to blue mottled glaze, impressed Ruskin England to underside, 11.5cm high £40-60
- 10 A pair of late 19th century German etched plaques by Mettlach, circular with polychrome depiction of lady and gentleman on horseback and jumping a fence, signed Stärke '91, impressed marks and numbers 2041 and 2042 £80-120

Lot No Description



10

- 11 An early South American possibly Mayan pottery jug, hand thrown, of square sided form, the neck as a Tribesman torso holding a bowl and the spout, loop handle, the body with Chieftain masks in feathered headdress, heavily decorated with foli in low relief, 24cm high £100-200



11

- 12 A pair of green glass decanters, globular shape with triple ring neck and facet cut mushroom shape stopper, 22cm high, a set of four roemers with applied raspberry prints to stem, 12cm high and matching smaller pair 10cm high (8) £100-150
- 13 An early 20th century blown, drawn and moulded glass Yard of Ale glass, 91cm long £40-50

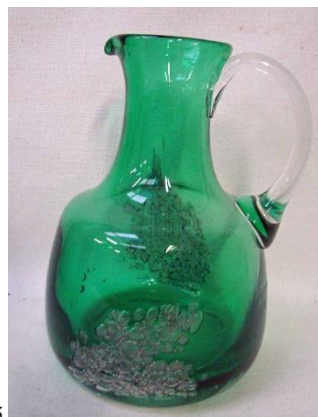
Lot No Description

- 14 A pair of 20th century claret jugs in the form of a duck with moulded glass body and electro plated mounts, 25cm high £100-200



14

- 15 Zweisel by Heinrich Löffelhardt, a 20th century green glass jug of mallet form with clear glass loop handle, opposing panels of bubble inclusions to the body, 24cm high £30-50



15

- 15A A Swarovski silver crystal Maxi Swan from the Soulmates range produced for the 1995 centenary, designed by Anton Hirzinger, with original fitted box, 16cm high £600-800

Oriental Curios

- 16 A collection of four carved Chinese jade/hardstone figures, 12cm to 15cm tall £40-60
- 17 A collection of four carved Chinese jade/hardstone pendants as dancing figures, 10cm to 14cm high £40-60

Lot No Description

- 18 A collection of four carved Chinese jade/hardstone Ruyi, 13cm - 23cm long £50-80
- 19 A collection of six carved Chinese jade/hardstone figures female musicians, each 9cm high £40-60
- 20 A large carved Chinese jade/hardstone Ruyi with engraved stylised foli, 39cm long and a hardstone bracelet as a coiled dragon, 14cm diameter (2) £40-60
- 21 A carved Chinese hardstone puzzle ball consisting of six layers, 13cm diameter £30-50
- 22 A Chinese jade/hardstone brush pot carved in relief with flowering trees and bamboo, 10cm high £30-50



22

- 23 A collection of six carved Chinese jade/hardstone hooks as dragons, 10cm by 15cm long £40-60
- 24 Three carved and pierced Chinese jade pendants decorated with stylised animals and devises, 4.5cm to 5cm diameter £30-40
- 25 A collection of eight Hon Shan carved funerary figures, each up to 7cm tall £40-60
- 26 A pair of Chinese hollow bronze models as Pixou, each 8.5cm long £40-60

Lot No Description

- 27 A Chinese cast copper Ruyi, decorated with birds and foli, 28cm long £30-40
- 28 A pair of Chinese hardstone paperweights of rectangular form, each carved with a pair of dragons and pearl, 23cm by 3cm £30-40
- 29 A large Chinese carved jade/hardstone paperweight as a resting dragon, 25cm long £40-50
- 30 A carved Chinese jade/hardstone sculpture as a Pixou, 14cm high by 12cm long £40-50



30

- 31 A Chinese carved jade/hardstone circular Bi, 10cm diameter and five figures as musicians, 13cm high (6) £30-40
- 32 A Japanese Tokyo School brown patinated bronze sculptural model of a boy with basket and rod fishing for crabs, on a naturalistic base, impressed mark to side of kneeling knee, on hardwood stand, 44cm long £200-400



32

Lot No Description

Collectables

- 33 An early 20th century Automaton, a pair of clockwork singing birds in a brass cage, possibly French, 28cm tall £100-150
- 34 A 19th century German Symphonion musical box, oak case richly carved in a Rococco style with figures and cherub within scrolling foliate borders, mechanical wind up movement by Shutz-Marke, number 808787, with twenty-three 30cm discs and a winding handle, 50cm wide £350-500



34

- 35 An Edwardian mantel clock of balloon form, mahogany and inlaid case, ivory coloured dial with Arabic numerals and flower swags, key wound movement striking on a gong, inscribed REX 90, supported on brass bun feet, 30cm high £50-80
- 36 A late 19th century copper and silver hunting horn by Köhler and Son of typical flared circular form with hallmarked silver mouthpiece and mount, 23.5cm long £100-150
- 37 An early 20th century brass Coastguard Telescope inscribed Ross London, No 44293, Patent, 68cm long with associated wood and brass folding tripod £80-100

Lot No Description

- 38 An early to mid-20th century three inch Astronomical Telescope by Broadhurst Clarkson and Co London, brass with crackled black lacquer finish to 93cm body tube, adjustable sighting scope and additional lenses, wooden case and wooden tripod with steel mounting frame £200-400



38

- 39 An early 19th century walnut and marquetry inlaid tea caddy of rectangular form, hinged dome cover enclosing twin lidded tea compartments, 17cm long and a similar satinwood example, 17.5cm long (2) £30-50
- 40 An early 19th century rosewood tea caddy of sarcophagus form, the hinged lid enclosing a pair of removable caddies, each with hinged covers, metal carry handles, raised on shallow bun feet, 25cm long £40-60



40

- 41 A 19th century walnut jewellery box of typical rectangular form, the slightly domed hinged lid with central recessed carry handle opens to reveal fitted jewellery tray, hinged fall front enclosing a single drawer, 22cm wide £40-60

Lot No Description

- 42 A Victorian rosewood table cabinet inlaid with mother of pearl, the hinged pagoda lid opening to reveal a rectangular mirror in tooled gilt leather frame and letter holder behind, above a shallow open well fitted for jewellery, a pair of doors to front open to reveal three drawers, one fitted for watch and jewellery, one open and one fitted with folding writing slope, circular wooden carry handles, raised on four carved wooden feet, 33cm high by 30cm wide by 23cm deep £200-300



42

- 43 A Victorian pierced brass two-tier bobbin stand, the turned central support surmounted by a pin cushion, set on a leaf shape base, 22cm high £50-80
- 44 A Victorian turned brass two-tier bobbin stand of plain circular form, the turned central support surmounted by a well, 18cm high £40-60
- 45 A Victorian tortoise shell veneered bobbin holder with ivory topped and white metal inlaid supports on a rectangular box base with single drawer on brass bun feet, 20cm high £70-100
- 46 A collection of eleven Mauchline and other treen ware souvenir boxes with named views and pictorial scenes, 7cm to 17cm long £80-100

Lot No Description

- 47 A collection of ten Mauchline and other treen ware souvenir boxes with named views and pictorial scenes, 7cm to 25cm long £70-100
- 48 A collection of seventeen items of Mauchline treen ware, sixteen with souvenir scenes including boxes, photo frame, needle holders, page turner, glove stretcher, ring tree, darning mushroom and others £100-150
- 49 A 19th century stump work and bead work tapestry depicting an exotic bird on a flowering branch, on a brown wool embroidered background, 39cm by 36cm £80-100



45



48



49

Lot No Description

- 50 A 19th century stump work tapestry depicting a spray of flowers on a brown wool embroidered background, 63cm by 50cm £80-120
- 51 An 18th century silk and stump work tapestry rural landscape depicting figures and animals on a track, 26cm by 29cm £30-50
- 52 A cut fabric diorama still life of flowers in a basket on a black background in a rectangular frame, 23.5cm by 29cm, a similar cut fabric and long stitch diorama in a bowed glass ebonised oval frame, 19.5cm by 14.5cm and a pot pourri diorama of natural dried flowers in a vase, circular frame, 16cm diameter (3) £50-80
- 53 A cut fabric and feather diorama, still life of flowers on a mauve ground in rectangular maple frame under glass, 25cm by 20cm and a similar cut fabric and bead diorama on a printed cut paper ground in a rectangular frame under glass, 24cm by 20cm (2) £50-80
- 54 A pair of Victorian shell dioramas a still life basket of flowers, on an olive green fabric ground in rectangular frame under glass, 17cm by 22cm £70-100



54

Lot No Description

- 55 A Victorian shell diorama as a still life basket of flowers in a rectangular frame under glass, 13.5cm by 17.5, another cut fabric and seaweed example as a floral wreath, 19.5cm by 12cm and another shell, cut fabric and seaweed example as a girl in a full length dress, 14cm by 9cm (3) £50-80
- 56 A Victorian cut fabric, wicker and dried flower diorama as a basket of flowers under a glass dome, 45cm high £50-100

Militaria

- 57 Military interest, a collection of Great War memorabilia, Ambulance Driver Harris Strudwick, Victory Medal and British War Medal embossed H. Strudwick in box of issue and original ribbons £120-150

Note: Driver Strudwick was also awarded the French Croix de Guerre. The medal is absent the Fourragère is present with Award Certificate for Croix de Guerre in his name as well as a quantity of photographs, maps of the Western Front, two pieces of shrapnel and other ephemera



57

Lot No Description

- 58 A German Nazi Third Reich Hitler Youth Knife, by RZM, the plain blade numbered M7/27, dated 1939 plated hilt with plastic grips, one grip inset with diamond shape Hitler Youth enamelled badge, steel and leather scabbard 24cm long £80-120
- 59 Military Interest , First Battalion Loyal North Lancashire Regiment, a pictorial souvenir album containing thirty-four photo prints taken at Secunderabad India 1926, front cover and spine missing £40-60
- 60 Military interest, a pair of Great War medals, 187139 SPR. F. Callaway. R.E. Sapper Frank Callaway 477th Field Company of the Royal Engineers died of wounds 15 August 1817, buried in New Irish Farm Cemetery Ieper, together with copy of his M.I.C print out of C.W.G.C and a copy of the War Diary for the date of his death £40-60
- 61 Two medals 4479 Pte. J. Biddall. Manch. Regt. King's Medal with two bars South Africa 1901 and 1902, Queen's Medal for Long Service in the Volunteer Force without inscription £50-100
- 62 A pair of Boer War Medals 2712 Pte. J. Lansdown, Glouc. Rgt, Queen's medal with two bars Cape Colony and Orange free State, King's Medal with two bars South Africa 1901 and 1902 £100-150



62

Lot No Description

No lots 63-69

Jewellery, Silver & Watches

- 70 An unusual Chinese string of twenty glass beads, large globular shape, each individually internally painted with a Buddha and inscribed, each 4cm diameter £200-300



70

- 71 A late Victorian silver flower vase of flared tapering form, the shaped edge and foliate embossed rim graduating down to a leaf knop and domed circular foot, Sheffield 1904, 5.04oz, 18.5cm tall £50-70
- 72 A pair of Edwardian silver bowls of flared circular form with shaped edge and embossed body decorated with panels of scrolls and foliage, London 1910, 5.4oz, 6cm high £50-70
- 73 A late Victorian silver three-piece Batchelor tea service by Charles Stuart Harris, London 1888, of footed melon form, each piece repousse decorated with flower heads and foliage, each reserved with a cartouche, 12.21oz £100-150
- 74 A Victorian silver goblet by George John Richards circa 1850 the bowl of waisted form repoussé decorated with raised panels of leaves, the stem as a tree trunk surrounded by leaves on a domed naturalistic circular foot, London mark, date mark obscured, 16cm high £100-150

Lot No Description



74

- 75 A Cartier Paris gold plated ballpoint pen, reeded finish, number 040385, twist mechanism, in original fitted case within a box, 14cm long £100-150
- 76 A Georg Jensen Danish silver panel bracelet designed by Hans Hansen, of elongated rectangular form with ten square panels, stamped with makers mark, designers signature, 925S Danmark 18cm long, with fitted box and outer sleeve £200-300



76

- 77 A French 18ct gold tested diamond cluster ring in a white gold lattice effect marquise setting, ring size M, 3.5g £120-150
- 78 A modern 18ct gold tested diamond cluster ring in a marquise setting with diamond set shoulders, ring size N, 4g £200-250
- 79 An modern 18ct gold ruby and white stone dress ring set with two bands of five clear stones overlapped by a band of five small rubies, ring size J, 5.1g £120-150

Lot No Description

- 80 A French 18ct gold tested solitaire ring, with a single diamond in an eight claw sunburst setting, ring size N, stone size approx. 0.2ct, 2.3g £180-220
- 81 An 18ct gold tested ruby and diamond cluster ring, the central oval ruby approx. 0.6ct surrounded by ten diamonds, ring size L, 3.3g £150-200
- 82 An 18ct gold tested tanzanite and diamond ring, the central oval blue stone approx. 0.75ct flanked by a pair of diamonds, shoulders set with single diamonds, ring size P, 4.2g £150-200
- 83 An early 20th century 9ct gold cluster ring, centrally with a garnet surrounded by six pearls within a border of twelve garnets, ring size N, 6.2g total weight £80-120



78



79



81



83

Lot No Description

84 An 18ct yellow gold and diamond ring set with five graduated claw set stones, the largest central stone approx. 0.2ct, ring size P 1/2, 3.6g £150-200

85 A yellow metal and diamond three-stone ring, unmarked shank, approx. 0.6ct of diamonds, ring size L 1/2, 2.2g £200-250



85

86 A platinum and diamond ring of crossover form, set with a pair of diamonds each approx. 0.2ct, gem set shoulders, ring size Q, 3.9g £150-200



86

87 A modern 14K white gold diamond ring, centrally with a square cut stone flanked by a pair of smaller stones, the shoulders set with triple stones, total weight of stones, 0.98ct approx., ring size K, 3.7g total weight £600-800



87

Lot No Description

88 A platinum and diamond three stone ring, the central cushion cut stone 6.2mm by 6mm by 3.68mm deep, flanked either side by a pair of cushion cut diamonds, 4mm by 3.35mm deep and 4.4mm by 2.78mm deep, total diamond weight 1.69ct approx., clarity SI-I1, colour I/J/K, total weight 3.77g, ring size P 1/2 £1500-2000



88

88A A French 18ct gold tested pin brooch of circular petalled form centrally set with a diamond surrounded by twelve plain petals within a border of twelve openwork petals each set with a small diamond, 3cm diameter, 5.9g total weight £250-300

88B An early 20th century 9ct gold ladies bangle of openwork form, set with amethyst and pearl, centrally a single amethyst surrounded by ten pearls flanked either side by four graduated amethysts interspaced by three pearls, marked 375, 16.4g total weight, 165mm wide £150-200



88B

89 An Omega De Ville yellow metal ladies wrist watch, rounded rectangular face, gilt dial with baton markers, mesh strap in original box £50-60

Lot No Description

- 90 A gentleman's stainless steel Rolex Oyster Perpetual Datejust wrist watch, the signed silvered 30mm dial further inscribed Superlative Chronometer Officially Certified, date aperture at 3, automatic movement, original Rolex Steelineox Jubilee bracelet number L11, 62510H, recently serviced, no papers £900-1200



90

- 91 A gentleman's 18k yellow gold Rolex Oyster Perpetual Datejust wrist watch, the signed gilt 30mm dial with baton markers further inscribed Superlative Chronometer Officially Certified, date aperture at 3, automatic movement, original Rolex 18k yellow gold bark texture, Jubilee bracelet number 8210, serial number 8477775, model 16078, recently serviced, with brown leather box and booklets £7000-9000



91

Lot No Description

- 91A A 9ct gold cased Hunter pocket watch, keyless lever movement inscribed Rolex, white enamel dial with Arabic numerals, secondary seconds dial at 6, hallmarked Chester 1924 £180-220

Maps, Prints & Paintings

- 92 Saxton (Christopher) and Hole (William), Lancastriae Comitatus Palatinus Olim Pars Brigantum, monochrome map of Lancashire 1607 or later, 29cm by 30cm £200-250
- 93 Steven Townsend, Isla, signed limited edition print, 16/675 with certificate, signed verso £50-80
- 94 Steven Townsend, Roy and Lilly, signed limited edition print, 457/675 with signed certificate £50-80
- 95 Harris (John) Fores's Stable Scenes after J F Herring Snr, The Mail Change, The Hunting Stud, The Team and Thorough Breds, published by Messrs Fores, March 17th 1846, four hand colored aquatints each 52cm by 76cm £200-300



94



95

Lot No Description

Lot No Description

96 Sir William Russell Flint (1880-1969), The Shower, a reproduction in colours, pencil signed to the margin, bears publishers blind stamp, coloured lithograph, 42cm by 55cm £80-120



96

97 Sir William Russell Flint (1880-1969), Rosa and Marissa, a reproduction in colours, pencil signed to the margin, bears publishers blind stamp, coloured lithograph, 44cm by 60cm £80-120



97

98 Robert Cresswell Boak (1875-1949), British, Sale Wheel, signed watercolour and another by the same hand, Pudseys Leap Sawley, each 23cm by 33cm, a pair £80-120

99 Edwin Beattie, New Street (Preston) from Lord Street, initialled watercolour, dated 1891, 46cm by 34cm £200-300

100 Edwin Beattie, South Side Lord Street from New Street (Preston), initialled watercolour, dated 1891, 46cm by 34cm £200-300

101 Edwin Beattie, The Shambles from Lancaster Road (Preston), initialled watercolour, 30cm by 49cm £200-300



101

102 Edwin Beattie, Conway Castle, signed watercolour, 24cm by 36cm £200-300

103 W N 'Norman' Gaunt (1918-2001), Wycollar Village, signed watercolour, 30cm by 40cm £100-150

104 Albert Woods (1871-1944), The River Hodder near Whitewell Chipping, signed watercolour 39cm by 54cm £100-200



104

Lot No Description

- 105 M Jackson, British Highland Landscape with Cattle Resting, signed oil on canvas, and another by the same hand, Moorland Landscape with Sheep at Rest, signed oil on canvas, each 39cm by 59cm a pair £160-200



105

- 105A John Higginbotham (20th/21st century), Dipper and Butterfly by a Stream, signed oil on canvas, 48cm by 59cm £200-300

- 106 Continental School, in the manner of Francois Eliaerts, Still Life of Flowers on a Marble Shelf, unsigned oil on board, 54cm by 44cm £100-200

- 107 C L Lockton, Still Life of Fruit, signed oil on board, 19th century in oval frame, 44cm by 58cm £50-100

- 108 Continental School, Still Life Vase of Flowers on a Shelf, unsigned oil on board, 19th century, 44cm by 36cm £80-120



108

Lot No Description

- 109 Edward Armfield (1817-1896), Two Terriers chasing a Rabbit, oil on canvas, signed E Armfield lower right, 49cm by 66cm £350-400

- 110 Helen Rhodes (b.1970) British, a Pair of Cats, signed mixed media and another by the same hand, Piggy Back featuring three tortoises, a pair, 27cm by 21cm £100-150

- 111 Helen Rhodes (b.1970), British, Seated Cat in a Garden, signed mixed media, 35cm by 26cm £50-80



111

- 112 Helen Rhodes (b .1970), British, Sheep on a Hill, signed mixed media, 38cm by 31cm £60-100



112

[Lot No](#) [Description](#)

Furnishings

- 113 An Edwardian mahogany corner chair, line and foliate inlaid, the cresting rail over a pair of carved and out swept arms above three pierced vase shape splats, upholstered seat, on four splayed taper legs with X stretcher £40-60
- 114 An early 20th century mahogany armchair with lattice feature to upholstered back, carved seat with fitted cushion on top £40-60



114

- 115 A set of four early 20th century stand chairs with serpentine top rail, pierced central splat, drop in tapestry upholstered seat, square taper front legs with spade feet £80-120



115

[Lot No](#) [Description](#)

- 116 A pair of early 20th century mahogany bow back armchairs, the carved cresting rail merging into curved arms, thin square spars interspaced by similar columnar spars centred with ovals, upholstered seat, square taper legs to front and sabre legs to rear £100-150
- 117 An Edwardian inlaid rosewood show frame two-seater sofa, the sides, back and seat upholstered in green velour, square tapering front legs with spade feet and pot castors, 124cm wide by 70cm deep £100-150

117



- 118 An early 19th century chinoiserie decorated dressing table mirror, the shaped rectangular glass hanging between urn finial topped square supports, the base as a miniature slope front bureau with fitted interior above a single shaped drawer, raised on bun feet, the whole back lacquered and painted with flowering blossoms and foli, 89cm high £200-300
- 119 A Victorian mahogany breakfast table, the oval tilt top on turned and carved support, the central boss radiating four carved scroll legs terminating in pot castors, 138cm long by 100cm wide by 75cm high £150-200

Lot No Description

- 120 A Regency rosewood tilt-top breakfast table, the circular top with cross banding and brass inlay, centrally inlaid, on turned gun barrel and carved support, brass inlaid quadripartite platform terminating in carved scroll work feet, 132cm diameter by 72cm high £600-800

120



- 121 A late 19th/early 20th century mahogany wind out dining table, the rounded rectangular two-leaf top with moulded edge and three extra leaves, raised on heavy leaf carved scroll cabriole legs, 160cm long & 130cm wide by 74cm high extending to 300cm with winding key £700-1000

- 122 A Victorian rosewood library table, the rounded rectangular top above a pair of drawers, raised on cheval style supports with raised turned central stretcher, carved scroll feet on brass castors, 77cm high by 122cm wide by 60cm deep £200-300

- 123 A French style reproduction two-tier occasional table, shaped rectangular form inlaid with foliage mounted with brass edges and ormolu to cabriole scroll legs, carry handles to lower tier, 87cm wide by 50cm deep by 90cm high £200-300

Lot No Description

- 124 A French style reproduction ormolu mounted Vitrine, serpentine outline, three-glass display incorporating single door, shelves and fabric lined, Vernis Martin style panels beneath, supported on cabriole legs, 170cm high by 75cm wide by 37cm deep £250-350



121



124

Lot No Description

125 A French style reproduction bombe commode, rectangular pink/grey/white marble top above a pair of drawers, ormolu and gilt metal mounts, supported on cabriole legs £350-450

126 A George III mahogany tray top bedside commode, the gallery pierced with three hand grips, serpentine front housing a tambour cover above a deep pull out base with a pair of drawer fronts, internally inset with an olive green leather skiver, raised on square legs, 76cm high by 55cm wide by 49cm deep £200-300

127 A late 18th/early 19th century Dutch walnut and marquetry inlaid display cabinet over chest of drawers, the shaped arched cornice centred with a carved organic cartouche above twin glazed doors and glazed canted returns enclosing shelves, the bombe shape base having three full width drawers furnished with gilt metal handles and escutcheons, on four bun feet, the whole profusely inlaid with flowering foliage and urns, 350cm high by 175cm wide by 40cm deep £3000-5000

Lot No Description



126



127

The Directors and Staff of Silverwoods would like to take this opportunity to thank you for your custom throughout 2016 and would also like to wish you a Happy Christmas and Prosperous New Year

Sale Dates for 2017

16th February

20th April

15th June

17th August

12th October

14th December