

Silverwoods of Lancashire

October Sale On Thursday 27th October 2016 at 10.00am

at the Silverwoods Auction Room
Clitheroe Auction Mart
Lincoln Way
Clitheroe, Lancashire, BB7 1QD

Viewing Times

Tuesday 25th 4.00pm – 6.30pm
Wednesday 26th 10am – 2pm
Thursday 27th from 8.30am to start of sale
Or by appointment
Sale Starts at 10am

Tel: 01200 423322 Fax: 01200 429263
Buyers Premium – 18% (including VAT)

Entries are invited on every Monday between
9am – 3pm
Other times available by appointment
Please contact Wilf Mould

Lot No Description

**English, Continental & Oriental
Ceramics & Glass**

1 A Rare Shelley 1930's forty piece tea service for twelve places, decorated in a Vetch/Sweet Pea pattern consisting of twelve each of cups, saucers and side plates, two bread plates, milk jug and slop bowl £80-120

2 A pair of Royal Worcester figures depicting children: Thursday's Child, number 3260, 16cm high and Friday's Child, number 3261, 17cm high (2) £40-60

3 A Crown Derby vase, oviform with cylindrical neck, decorated with chrysanthemum, lily and peony on a burnished raised gilt over underglaze blue ground, neck moulded in shallow relief with gilt stylised flowers on cobalt blue ground, 21cm high £80-120



3

4 Royal Crown Derby, a pair of bone china Chelsea birds set on floral encrusted Rococco style bases, 15cm high (2) £120-180



4

Lot No Description

5 Two Royal Crown Derby bone china paperweights modelled as Persian cat, 16cm and Egyptian cat, 22cm (2) £100-150

6 Two Royal Crown Derby bone china paperweights modelled as a ram, 14cm high and a horse, 13cm long (2) all boxed £60-90



6

7 Four Royal Crown Derby bone china paperweights modelled as a koala, 12cm high, a platypus, 12cm high, a chipmunk, 10cm high and a gopher, 11cm high (4) £60-100

8 Three Royal Crown Derby bone china paperweights modelled as a golden carp, 18cm long, a crab, 12cm long and a penguin, 13cm high, all boxed (3) £50-80

9 Three Royal Crown Derby bone china paperweights modelled as a dolphin, 18cm long, a seal, 12cm long and a walrus, 10cm high, all boxed (3) £50-80



9

10 Four Royal Crown Derby bone china paperweights modelled as a cat, 13cm high, a hamster, 6cm high, a rabbit, 7cm high and a baby rabbit, 7cm long, all boxed (4) £50-80

Lot No Description

- 11 Three Royal Crown Derby bone china paperweights modelled as a fox, 11cm long, a snail, 13cm long and a frog, 7cm high, all boxed (3)
£40-70



11

- 12 Four Royal Crown Derby bone china paperweights modelled as a monkey and baby, 10cm high, a badger, 8cm high a pig, 13cm long and a piglet, 7cm long, all boxed (4) £50-80
- 13 Three Royal Crown Derby bone china paperweights modelled as a duck, 11cm long, an owl, 13cm long and a quail, 11cm long, all boxed (3)
£40-70
- 14 A Dennis Chinaworks side step vase, designed by Sally Tuffin and painted by Heidi Warr in the Klimt Kiss pattern on yellow ground, dated 2007J, limited edition number 24 of 40, 25cm high £400-500



14

Lot No Description

- 15 A modern Moorcroft pottery jardiniere tubeline decorated in the Carp Circles design by Nicola Slaney, circa 2011, limited issue number 70 of 75, printed and impressed marks, 19cm diameter, boxed £100-150



15

- 16 A modern Moorcroft pottery vase of ovoid waisted form, tubeline decorated in the Blue Ebro design by Rachel Bishop, circa 2007, printed and impressed marks, 37cm high, boxed £100-200
- 17 A modern Moorcroft pottery vase of baluster form, tubeline decorated in the Star of Mikan design by Sian Leeper, circa 2003, limited issue number 73 of 200, printed and impressed marks, 36cm high, boxed £100-150
- 18 A modern Moorcroft pottery vase of ovoid form, tubeline decorated in the Amber Glow design by Sian Leeper, circa 2004, limited issue number 43 of 150, printed and impressed marks, 26cm high, boxed £120-200



18

Lot No Description

- 19 A modern Moorcroft pottery vase, tubeline decorated in the Gustavia Augusta design by Debbie Hancock, dated 1998, printed and impressed marks, 26cm high £150-200



19

- 20 A modern Moorcroft pottery table lamp, tubeline decorated in an Aquilegia style design on a wooden base, 23cm high plus fitting £40-60

- 21 A Moorcroft pottery large table lamp, tubeline decorated in the Finches design, squat baluster form, 22cm high plus fitting £80-120

- 22 A Moorcroft pottery vase of baluster form, tubeline decorated in the Finches design on deep blue ground, 26cm high £120-150



22

Lot No Description

- 23 A Moorcroft pottery table lamp base, tubeline decorated in the Leaf and Berries pattern on a graduating blue ground, set on an octagonal wooden plinth, 28cm high plus plinth and fitting £300-350

- 24 A Walter Moorcroft lidded bowl of circular form tubeline decorated in the Orchid design on deep blue ground, 16cm diameter £50-80

- 25 A Walter Moorcroft vase of globular form with short narrow neck, tubeline decorated in the Anemone design on green/blue ground, 11cm high £50-80



25

- 26 A Walter Moorcroft lidded ginger jar of typical form, tubeline decorated in the Hibiscus design on graduating blue ground, 15.5cm high £70-100

- 27 A pair of early 20th century William Moorcroft pottery coffee cans and saucers, tubeline decorated in the Pomegranate pattern, cup 4.7cm high, saucer 12cm diameter, signed and impressed marks, date marks 1913 and 1914 £180-200



27

Lot No Description

- 28 A William Moorcroft pottery vase of ovoid form, tubeline decorated in the Pomegranate pattern on deep blue ground, signature and impressed marks, 16.5cm high £120-150
- 29 A large Royal Copenhagen sculptural model, Polar Bear and Seal, number 1108, 23cm high £100-150
- 30 Herend Hungary, a hand painted porcelain model of a kingfisher with fish in its beak, 13cm high £60-80
- 31 Herend Hungary, a hand painted porcelain model of a seal on its back devouring a clam, 18cm long £40-60
- 32 Herend Hungary, a hand painted graduated trio of dolphins, 8cm - 15cm long (3) £40-60
- 33 An eighteenth century Chinese coffee pot of typical form with S scroll spout and shaped loop handle, decorated in underglaze blue with figures in a garden landscape, peaches mark to underside, 19cm high, restored £100-150
- 34 A pair of Imari ginger jars of typical form, lidded, decorated in blue and red with panels of foliage, 26cm high £40-60
- 35 A mid/late 20th century Italian pottery model of an Elephant with a Tiger, natural colourways, inscribed and makers mark to foot, Bassano Favaro Lecchetto, number 1513, 29cm high £70-100
- 36 A Victorian glass Girandole wall mirror, the oval bevelled and cut glass wall plate mounted with a cranberry glass posy holder with trailed edge decoration, 31cm high £40-60

Lot No Description

- 37 A small collection of cranberry glass including a pair of wavy edge trumpet vases, 16cm high, a wavy edge trumpet vase on compressed base, 21cm high, a pair of globular shape jugs with straight necks, 15.5cm high and a large scent bottle of straight cylindrical form with wrythen body and stopper, 16cm high (6) £50-80



30



33



36

Lot No Description

Curios

38 A collection of eleven Chinese Hongshan jade/hardstone carved figures, stylised animals and insects 6cm to 16cm (11) £50-70

39 A collection of four Chinese Hongshan jade/hardstone figures/devices, 10cm to 15cm (4) £40-60



39

40 A collection of seven Chinese Hongshan jade/hardstone carved bangle and stylised devices 4.5cm to 8.5cm (7) £40-60

41 A collection of ten Chinese jade/hardstone buckles, fertility symbols, ornaments and bracelets, 5cm to 13.5cm (10) £50-80

42 A collection of four Chinese jade/hardstone Ruyi, 10.5cm to 18.5cm (4) £50-80



42

43 A collection of ten Chinese jade/hardstone pendants in various designs, 4cm to 6cm (10) £50-80

Lot No Description

44 A collection of ten Chinese jade/hardstone pendants, circular and rectangular in various designs, 5cm to 6.5cm (10) £50-80



44

45 A Chinese carved jade sculpture depicting a mythical dragon dog and scorpion, 32cm £80-120

46 A Chinese carved jade sculpture of a Pixou, 17cm high £50-80



46

47 A Russian bronze sculpture depicting the heads of Karl Marx and Vladimir Lenin facing right, 40cm long on wooden plinth £150-200



47

Lot No Description

- 48 An Oriental carved bone walking stick constructed in nine sections and decorated with dragons and octopus, pommel grip and brass ring to terminal, 86cm long £100-150
- 49 A late 19th century set of brass counter top balance scales by W T Avery, Agate Patent Balance, set on hardwood rectangular base with dished circular pan, weight pan, seven assorted weights and brass coffee scoop, 52cm high £80-120
- 50 A John Lizars of Glasgow Challenge Field camera and lens, with four plate holders and carry case £100-150



50

Lot No Description

- 52 An impressive fine quality 19th century French Empire style clock garniture, veined white marble and gilt bronze, the clock with circular gilt dial 15cm diameter, Arabic numerals inscribed A La Renaissance 49 Bd. St. Martin Paris, surmounted by a standing lion with ball on a shaped marble cornice supported by four Corinthian style columns and similar plinth set on four gilt feet, the pair of urns of typical form with pineapple finials, laurel swags, applied foliage and handles on gilt support with marble plinth and four gilt feet, height of clock 60cm £800-1200



52

Clocks & Toys

- 51 An early 20th century brass cased repeater carriage clock, the white enamelled rectangular dial with chapter ring, Arabic and Roman numerals inscribed Nelson, Bury, the twin barrel repeater movement striking half hours on a gong, signed T.C., fitted case £120-150



51

- 53 A Triang boxed TCX Electric train set, T.T GAUGE with fifty-four items of boxed and unboxed track, trackside and rolling stock and ancillaries £150-250
- 54 Three boxed corgi diecast vehicles, Ford Thunderbird 214M KARRIER BANTAM, Lucozade van 411 and Ford Thunderbird 215 (3) £120-180



54

Lot No Description

- 55 Five boxed Dinky diecast Military vehicles, Recovery Tractor 661, Tank Transporter 660, Covered Wagon 623, 10 ton Truck 622 and 25 Pound Field Gun set 697 (5) £120-180
- 56 Two boxed Corgi and a boxed Dinky diecast vehicles, Mercedes 300SL Open Roadster 303, Lotus Mark Eleven Le Mans 151 and Jaguar 3.4 Saloon 195 (3) £100-150
- 57 Two boxed Corgi diecast vehicles, both are Aston Martin D.B.4 218 (2) £100-150
- 58 Five boxed Corgi and two boxed Dinky diecast vehicles, Corgi: Plymouth Station Wagon 219; two Chevrolet 'impala' 220; Chevrolet New York Taxi 221 and a Chevrolet 'State Patrol' 223, Dinky: Packard Convertible 132 and Desoto Firebird Sedan 192 (7) £100-180



58

- 59 A Bassett-Lowke B.R. A3 class 4-6-2 loco and tender, No 60103 Flying Scotsman in green livery, BL99024 with 12-14 volt D.C motor, limited issue £350-450



59

Lot No Description

Militaria

- 60 A Victorian electrotype circular salver, relief decorated after the antique with a battle scene around a central knob, ornamental border, 86cm diameter £100-150
- 61 A brass cased Prismatic Compass Mark VIII, circa 1915 and its user's manual printed 1917 £80-120
- 62 A collection of ten Ordnance Survey Maps, Military edition, seven printed on linen, three printed on paper, 1 17th century style map of North West England and a similar map of South West England (12) £80-120
- 63 A set of American Air Force Polaroid B-8 Flying Goggles with clear lens, nine spare lenses in original cotton wallet, instruction book and original card box with metal reinforced corners, specification number 3200 £60-100



61



63

Lot No Description

- 64 Nazi interest, Robert Ley, Die Grosser Stunde Das Deutch Volk in totalen Kriegseinsatz, Book 1 vol, Der Staat der Arbeit und des Friedens, ein Jahr Regierung Adolf Hitler, Book 1 vol (2) £30-50
- 65 Third Reich Silver Grade Panzer Assault Badge. Zinc alloy, marked on reverse R.R.S. (Rudolf Richter, Schlag bei Gablonz), semi hollow, so-called 'plain grass' version, very good quality badge with some silver wash remaining £150-170



65

- 66 A Nazi Germany KPM plaque of rectangular form transfer decorated in colour with a boy and girl in Hitler Youth dress 14.5cm by 10cm stamped to rear Modell des Amtes Schönheit der Arbeit. Flying eagle FL.U.V and Swastika, on triangular stand stamped with Eagle and Swastika, M, crown over KPM 1941 (2) £100-150



66

Lot No Description

- 67 A Nazi Germany KPM plaque of rectangular form transfer decorated in colour depicting a storm trooper, 14.5cm by 10cm inscribed So wie wir Kämpfen Arbeit Dú für den sieg! Stamped to rear Modell des Amtes Schönheit der Arbeit. Flying eagle FL.U.V and Swastika, on triangular stand stamped with Eagle and Swastika, M, crown over KPM 1941 (2) £100-150
- 68 A German Third Reich Dress Bayonet, fullered single edge blade stamped WKC, scroll quillion, plastic grips, birds head pommel, (blade tip broken), steel scabbard with leather frog £40-60



68

- 69 A German Third Reich enlisted man's Hews, clip point steel blade with narrow fullers, inscribed Arbeit Adelt, makers logo for F.W HÖLLER Solingen within an oval, silver plated hilt with two piece antler grip, black enamelled steel scabbard with plated mounts featuring Celtic Knotwork decoration and Swastika £300-400



69

- 70 Mid Victorian Other Ranks Militia Brass Bit Boss. Heavy cast brass bit boss, screw mounting posts removed £30-40

Lot No Description

- 71 8th King's Royal Irish Hussars King's Crown Officer's Bridle Boss. Silver Maid of Erin harp surmounted by a Kings crown surrounded by a shamrock wreath mounted on a heavy brass base surrounded by a garter carrying the regimental motto *Pristinae Virtutis Memores* on a leather harness mount £60-100



71

- 72 5th Royal Irish Lancers Officer's Stirrup Slips. A pair of brass stirrup slips with silver Maid of Erin harp surmounted by a Victoria crown £120-150

- 73 Victorian 5th Royal Irish Lancers Senior NCO's Hallmarked Silver Sleeve Badge. Hallmarked silver sleeve badge, Maid of Erin harp surmounted by a Victoria crown fully hallmarked silver £300-400

- 74 5th Royal Irish Lancers Senior NCO's Hallmarked silver Sleeve Badge. Hallmarked silver sleeve badge, Maid of Erin harp surmounted by a King's crown £300-400



74

Lot No Description

- 75 Selection of six Senior NCO's Silver Sleeve Badges - 5th Royal Irish Lancers or 8th Kings Royal Irish Hussars. Three die stamped white metal and three cast (Indian or Middle East made) white metal, Maid of Erin harp surmounted by a King's crown, good condition, all fixings present (6) £200-250

- 76 Selection of twenty Sweetheart and Mufti Badges including 173 Canadian Highlanders, 92nd Battalion CEF, Royal Sussex, Royal Marines, RAF, Armstrong Whitworth Munitions of War Imperial Service, Comrades of the Great War, Fleet Air Arm, Doncaster Civil Defence and others (20) £40-50



76

- 77 Selection of Military Hat Badges WWI and WWII including York and Lancaster, Royal West Kent, Royal Signals, Royal Dragoons, 10th Royal Hussars, FANY, ATS, WAAC, The King's Own, believed genuine, all fixings present (25) £70-100



77

Lot No Description

78 WW1 Medal Pair, Private H Mason
Lincolnshire Regiment. Swing
mounted pair consisting of 1914 -
1918 War Medal and Victory Medal
both correctly named to 22676 Pte. H.
Mason. Linc. R (2) £30-40

79 ARCHIE HEGARTY (MERCHANT
NAVY) British War Medal and
Mercantile Marine War Medal, board
of Trade Award Letter dated
29.4.1926 and Authority to Wear
letter No 105659 dated 29.4.1926 (4)
£40-70



79

80 A George VI Palestine Medal 1945-
48 2600614 SIGMN. J.E Anderson
R.SIGS, one clasp; an Army Book 64
(part 1) Soldiers Service and Pay
Book; a Recruitment letter; an
Enlistment letter; a Leave telegram;
Royal Signals and Parachute Badges;
a stainless steel board; a wallet and a
textile Nazi Eagle Insignia (11)
£40-60

81 Military interest, a George V 1914-
1918 Service Medal, 726 Pte J.
Hustwick R.A.M.C., and a trench art
silk Handkerchief Remembrance
from France (2) £40-60

82 A 1914-1918 War Medal and a
Victory Medal, 85210 GNR. E.
TEMPERLEY. R.A. (2) £50-80

83 A 1914-1918 War Medal and a
Victory Medal 25341 SJT. A.
HAMILTON. E. LAN. R. (2)
£50-80

Lot No Description

No Lot 84

85 Important Family Medal Group, 3
Generations - Boer war, WWI, WWII
& Northern Ireland Medals,
consisting of: Queen's South Africa
Medal with Transvaal, Orange Free
State & Cape Colony Bars. Correctly
engraved 11478 DR: W.
MELLVILLE. ASC. King's South
Africa Medal with South Africa 1901
& South Africa 1902 Bars. Correctly
engraved 11478 DVR: W.
MELLVILLE. ASC. WWI trio
consisting of 14-15 Star and British
War Medal both correctly engraved
T4-037653 DVR. W. MELLVILLE.
ASC. Plus Victory Medal name
removed. WWII Group consisting of
1939-45 Star, Italy Star, War Medal
and Africa Service Medal all
engraved 175553 W.C Melville and a
Scots Guard GSM with a Northern
Ireland Bar correctly engraved
24048471 CPL. I. MELVILLE SG.
This medal is also stamped R for
replacement. Relevant medal rolls
have been checked and clasps
verified. Copies of the relevant rolls
accompany this lot. Despite the
variation in spelling on some of the
medals it is believed that this group
represents three generations of the
Melville family (15) £500-600



85

Lot No Description

- 86 Interesting Group Crimea Medals, China Medal and LS and GC (William Mayhew Royal Artillery), consisting of Crimea Medal with Balaclava, Sebastopol and Alma clasps engraved BOMBR WM MAYHEW RA, China Medal with Taku Forts 1860 clasp engraved Serjt Wm MAYHEW No 4 Bat 2nd Bde Rl Arty, Queen Victoria Army Long Service and Good Conduct Medal engraved 2332 PENs SERGT Wm MAYHEW COAST RA and Turkish Crimea Medal engraved SERGT W MAYHEW RA Sardinian issue. Few small edge bumps and contact marks, complete with a framed photograph of Serjt Mayhew taken 1896, a year before his death and his cane Swagger stick £500-800



86

- 87 A rare cast bronze oval Ottoman Empire Artillery Gun plaque bearing the tughra of Sultan Abdul Hamid II, the last Ottoman Empire ruler who reigned 1876-1908, 35cm by 28cm £150-200



87

Lot No Description

Silver, Jewellery & Watches

- 88 A George IV Regency silver teapot of squat cylindrical melon form, heavily embossed with foliage, hinged knopped lid, S scroll handle, London 1829 and a matching cream jug, London 1836, teapot 17.5cm across body (2), 32.76oz £300-350



88

- 89 A George IV Regency silver water jug of compressed baluster form, embossed with foliage and fruit, reserved with a monogram E.R hinged lid with flower head knop, wooden handle, London 1824, 28.16oz gross, 24cm high £250-300

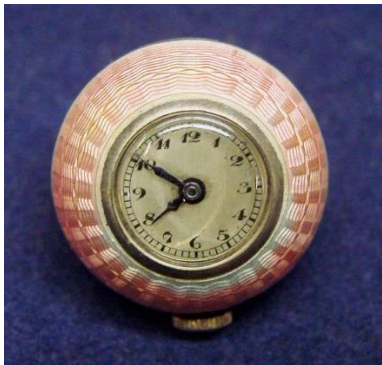


89

- 90 A George IV Regency silver two-handled sucrier, of typical cylindrical form, embossed with foliage, reserved with opposing cartouches, London 1830, 14.66oz, 21cm wide £120-150

Lot No Description

- 90A An early 20th century silver two-handled tray of rectangular form with double rounded corners, Sheffield 1926, 72oz, 50cm by 38cm plus handles £700-800
- 91 A 1930s nurse's fob watch of globular form with bulls-eye glass to front and back, 20mm silvered face with Arabic numerals and subsidiary seconds dial, visible movement to back, silver plated case £50-70
- 92 An early 20th century 935 silver and pink enamel guilloché case ball shape pendant watch, silvered dial with Arabic numerals, by Didisheim Goldshmidt number 16911, 24cm diameter £80-120



92

- 93 A mid-19th century silver pair cased pocket watch by Scott and Son, Kendal, fusée movement 53503, 4cm white enamel dial with Roman numerals, subsidiary seconds dial at VI case hallmarked 1865 £100-150



93

Lot No Description

- 94 An early 19th century silver pair cased pocket watch by B Ward, Newcastle, fusée movement, no 372, 4.5cm white enamel dial with Roman numerals, case hallmarked London 1804 £100-150
- 95 A mid-19th century silver pair cased pocket watch by Josh Osborne, Longton, fusée movement number 140, 4.8cm white enamel dial with Roman numerals, case hallmarked Birmingham 1845, silver hallmarked chain with T bar and hallmarked silver fob £150-200
- 96 A ladies Swiss 18ct gold wrist watch, inscribed Sahida Eterna Matic, circular gold face with Roman numerals, gold lugs, thin fabric strap, 20mm diameter, 14.2g, number 4169000 £150-200
- 97 A gent's Swiss vintage 18ct gold wrist watch by Curtis, square face with silvered dial, 3,6,9 and 12 interspaced by baton markers, date aperture between 4 and 5, 21 jewels, Incabloc Automatic on a later 9ct gold Wristwear strap, stamped 18K and 375, 60.4g £400-500



95



97

Lot No Description

98 An 18ct gold gentleman's full hunter pocket watch by Longines with lever movement, number 2529803, white enamel dial with Roman numerals and subsidiary seconds dial at VI, inscribed Longines Fratii Roller Bucharest, front cover embossed with a crown above a symmetrical letter F which is encrusted with diamonds and sapphires, inside a back case inscribed 18K, EFCO Longines mark and 2529803, dust cover inscribed Longines Grand Prix Paris-Anvers-Paris Bruxelles Milan-Berne Fratii Roller Bucharest £10000-12000

Note: Reputed to have been presented by King Ferdinand to King Faud of Egypt, on his death it passed by decent to his son King Farouk. This watch was purchased at Sotheby's 'The Palace Collection of Egypt' lot 1183, page 203 in the catalogue dated 20 March 1954



98

98A An 18ct gold neck chain, 56cm long, 13g £180-220

99 An Edward VII 1904 gold sovereign in a 9ct gold pendant mount with scroll suspension, gold plated fob type chain, 9.5g without chain £200-240

Lot No Description

100 A pair of modern 9ct white gold and diamond earrings, each set with a single stone approximately 0.2ct, 3.8mm diameter in hoop setting £400-500



100

101 A pair of Art Deco gentleman's mourning cuff links of octagonal form, 18ct white and yellow gold set with single central old cut diamond in jet effect mount linked by 9ct gold chain, 6g gross £120-150

102 An early 20th century 15ct gold tested brooch of oval form, beaded edge set with turquoise cabochon, 8.7g gross, 3.2cm by 2.2cm £100-120



102

103 An 18ct gold tested pendant/brooch of square form, centrally with large emerald coloured stone surrounded by twelve clear stones in acanthus leaf and bead mounts, 13.1g gross, 3.2cm by 3.2cm £80-100



103

Lot No Description

- 104 An early 20th century platinum link bracelet with eight square cut emerald effect panels interspaced with seven rows of two clear stones, 18.5cm long, a modern 15ct white gold pendant link and a 9ct white gold Arts and Crafts style pendant with an oval aquamarine coloured dropper and set with three seed pearls, 1.9g gross (3) £120-150



104

- 105 A late 19th century continental brooch, yellow metal of oval form with split pearl border around a mauve coloured enamel guilloché panel, centrally with moonstone type oval within diamond set ribbons and swags, 3.5cm long £100-120



105

- 106 A 585 marked yellow gold pendant of rectangular cast openwork form set with rectangular cut amethyst 22mm by 15mm with suspension loop, 9.8g total weight £100-150

Lot No Description



106

- 107 An early 20th century 15ct gold openwork pendant of oval form with three thin bands set with double leaves and four flower heads each set with five seed pearls, central tourmaline and leaf set dropper with similar dropper below, suspension ring, 3.4g, 4.5cm long £120-150



107

- 108 An early 20th century 15ct gold bar brooch, centrally with a clover leaf set with four small old cut diamonds, rope swags to either side, 4.1g gross, 5.1cm £180-220

- 109 An 18ct gold five stone sapphire and diamond ring stamped 18, 3.3g size O ½ £120-150



109

Lot No Description

- 110 A gold three stone diamond ring, the central stone approximately 0.25ct flanked by single stones approximately 0.10ct in a deco style rectangular white gold mount, 5.3g, ring size M 1/2 £100-150



110

- 111 A gold diamond solitaire style ring, the central stone approximately 0.25ct flanked by six small cut stones to each shoulder, in white gold mount, 5.5g, ring size M £100-150



111

- 112 An 18ct gold five stone diamond ring in a wish bone style, each stone size 3mm diameter, approximately 0.10ct, total weight of stones approximately 0.5ct, 4.6g, ring size M 1/2 £400-500



112

- 113 An 18ct gold solitaire ring with square cut diamond set in a white gold four claw setting, stone size 6mm by 6mm, approximately 0.85ct, 3.1g, ring size 0 £800-1000

Lot No Description



113

Paintings & Prints

- 114 A good quality pair of hand coloured prints depicting Fenland scenes, riverside scene with windmill and fisherman and rural scene with loggers crossing a ford, each 22cm by 50cm £40-60
- 115 Stella Platt (1913-2011), Near Uig, signed watercolour on card, 20cm by 27cm and another by the same hand, 23cm by 30cm, unframed (2) £50-80



115

- 116 In the manner of Myles Birket Foster, Sailing the Boat, watercolour, unsigned, inscribed to mount, 23cm by 17cm £80-120
- 116A Henry Shafer (1833-1916), Antwerp Street scene, watercolour, signed and titled, 25cm by 20cm £100-150

Lot No Description

- 117 Walter Schroeder RA, RBA, RI, TCI (1885-1932), view near Tutts Clump, Berkshire, signed watercolour, 24cm by 33cm £50-100



117

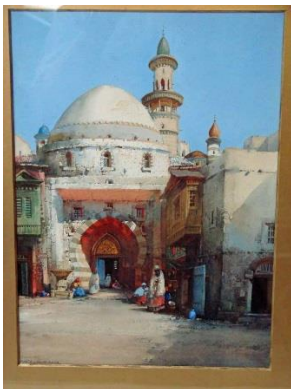
- 118 Y Gianni (19th/20th century Italian) Bay of Naples with figure on a balcony and Vesuvius, signed Gouache, and its companion Fishing scene, each 30cm by 47cm (pair) £120-180



118

- 119 Noel Harry Leaver ARCA (1889-1951), North African scene with figures, arch and mosque, signed watercolour and another similar by the same hand, each 37cm by 26cm (a pair) £1500-2000

Please note Artist Resale Right will apply to this lot



119

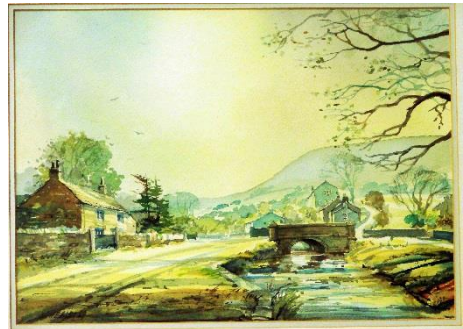
Lot No Description

- 120 Thomas Richard Colman Dibdin (1810-1893), French Street scene, possibly Beauvais, watercolour with body colour, signed T.C Dibden and dated 1878, 37cm by 53cm and another similar by the same hand titled St. Riquier, 37cm by 54cm (a pair) £400-600



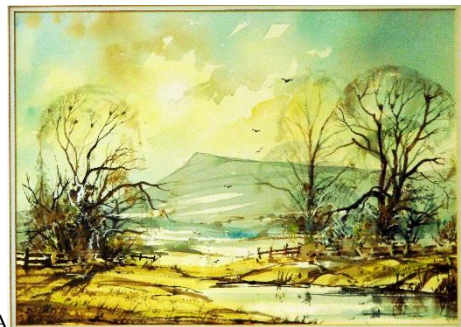
120

- 121 Brian Healey (late 20th century), Pendle from Downham, signed watercolour, 25.5cm by 35.5cm £50-80



121

- 121A Brian Healey (late 20th century), Pendle Hill from Rimington, signed watercolour, 25.5cm by 35.5cm £50-80



121A

Lot No Description

122 Steven Townsend (b.1955), Pied Wagtail, signed watercolour, dated 1982, 31cm by 28cm £100-150

122A John Higginbotham (20th/21st century), Dipper and Butterfly by a Stream, signed oil on canvas, 48cm by 59cm £400-600

123 Stella Platt (1913-2011), A Scottish Highland landscape, signed oil on board 35cm by 51cm £50-100

124 G Morgan, Seated Girl with Barrow & Goat on a Wooded Track, signed oil on board £100-150



124

125 L Wailion? English orchard scene with thatched cottage and seated figure, signed oil on canvas (20th century), 60cm by 49cm £100-150



125

Lot No Description

126 R Hayes (19th century) Loch Achray, signed oil on canvas, inscribed verso, 39cm by 59cm £80-120



126

127 Edward Armfield (1817-1896), Two Terriers chasing a Rabbit, oil on canvas, signed E Armfield lower right, 49cm by 66cm £450-600



127

128 Plinio Nomellini (1866-1943), Waving Corn, signed oil on board, 28cm by 43cm £5000-8000

Note Artist Resale Right will apply to this painting



128

[Lot No](#) [Description](#)

Furnishings

129 A large Arts and Crafts copper coal bin of lidded, two-handled cylindrical form, embossed with opposing circular panels of organic form, riveted base and lid, steel liner, 48cm high £100-150



129

130 A pair of adzed oak bookends by Robert 'Mouseman' Thompson of Kilburn, of typical form with carved trademark mouse to each sloping side, circa 1945, 16cm high £200-250



130

131 A pair of oak milking stools by Robert 'Mouseman' Thompson of Kilburn, three legged with kidney shaped seat carved to one side with a trademark mouse, 45cm high £300-400

[Lot No](#) [Description](#)



131

132 A 19th century oak dresser of small proportions, two tier, the upper section with moulded cornice above four shelves the lower two flanked by arch top doors enclosing small cabinets, set on a four leg base incorporating a pair of cabinets behind doors, square legs terminating in block feet, 197cm high by 91cm wide by 43cm deep £150-200



132

Lot No Description

133 A Louis XV style console table of serpentine form with white veined marble top above a pair of walnut and kingwood crossbanded drawers, cabriole legs with gilt ormolu mounts, 107cm wide by 85cm high by 42cm deep £150-200



133

134 A 19th century German Grunderzeit period walnut display cabinet, the glazed upper portion with moulded cornice over a plain frieze above a pair of fluted pilasters flanking a pair of doors enclosing a shelved and mirrored, cream interior, the projecting lower portion with full width slide above a single drawer and a pair of doors all with carved panels, the whole set on bun feet to the front and block feet at the rear, 195cm high by 104cm wide by 54cm deep £300-500



134

135 Persian runner carpet, central lozenge with geometric patterning surrounded by a red border 3.15m by 1.47m £300-400



135

